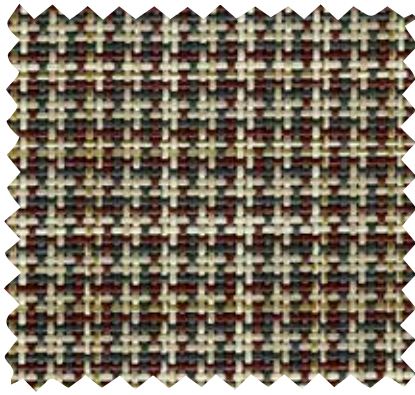


Phifertex®

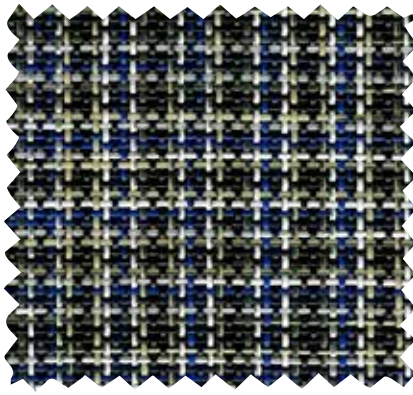
BY PHIFER

 Wicker Weaves
Slingable Fabrics

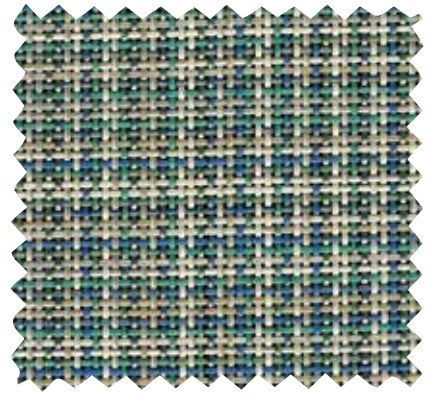




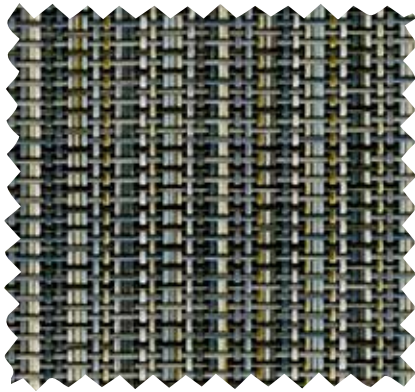
NEW | Tartan Desert | KCC
3039313 | Construction: 20x20



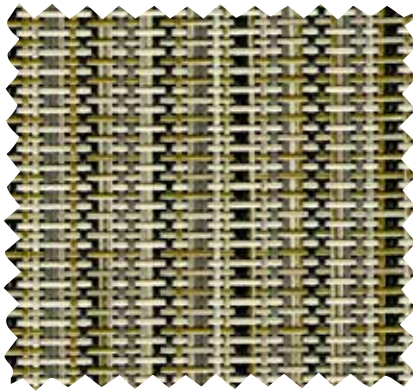
NEW | Tartan Cobalt | LIV
3039315 | Construction: 20x20



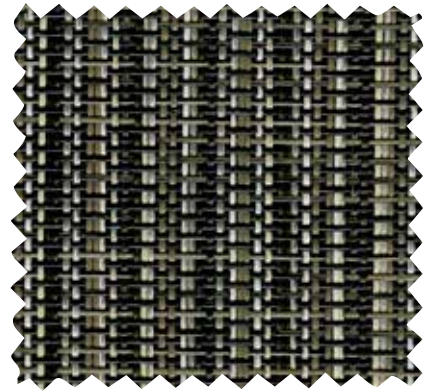
NEW | Tartan Teal | DCV
3039311 | Construction: 20x20



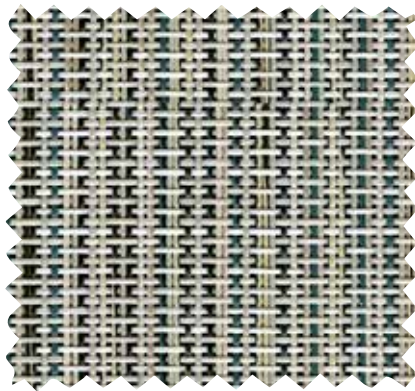
NEW | Sarasa Heron | LIX
3039317 | Construction: 20x20



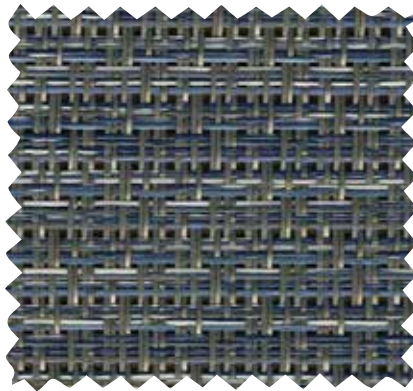
NEW | Sarasa Sands | NBD
3039319 | Construction: 20x20



NEW | Sarasa Coal | ZBX
3039321 | Construction: 20x20



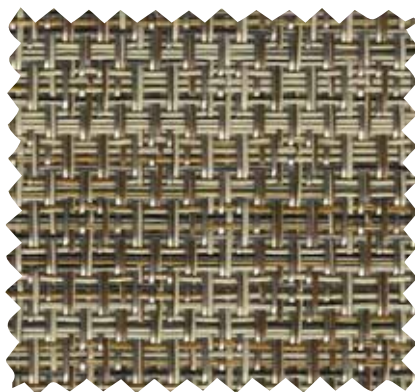
NEW | Sarasa Meadow | DCU
3039310 | Construction: 20x20



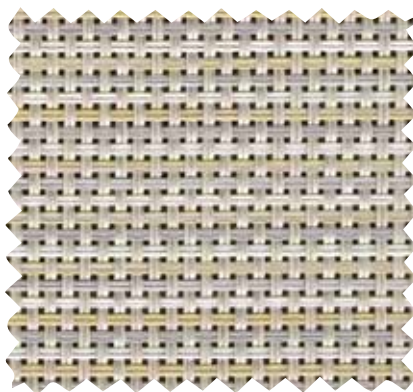
Free Spirit Denim | LHQ
3038263 | Construction: 22x22



Bevel Wicker Grey | ZBA
3038265 | Construction: 22x18



Napa Brindle | ET2
3027662 | Construction: 22x22



Watercolor Tweed Oyster | OGA
3028985 | Construction: 22x22



Watercolor Tweed Mocha | EX8
3028986 | Construction: 22x22





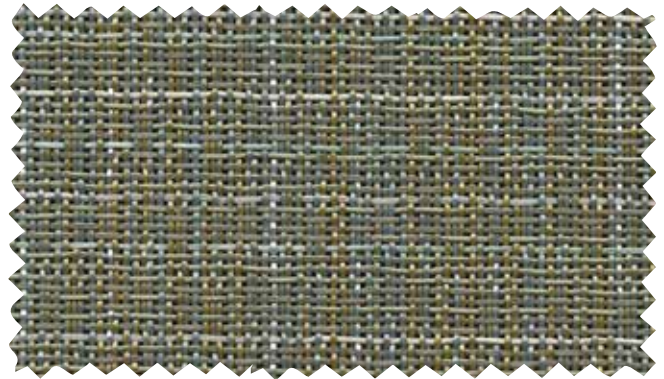
NEW | Amalfi Rapids | LIY
3039318 | Construction: 22x18



NEW | Amalfi Rust | KCD
3039314 | Construction: 22x18



Charm Platinum | YHK
3036916 | Construction: 22x18



Charm Blue Haven | LED
3035583 | Construction: 22x18



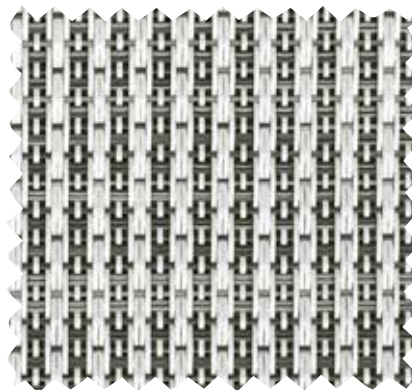
Charm Khaki | DBW
3036900 | Construction: 22x18



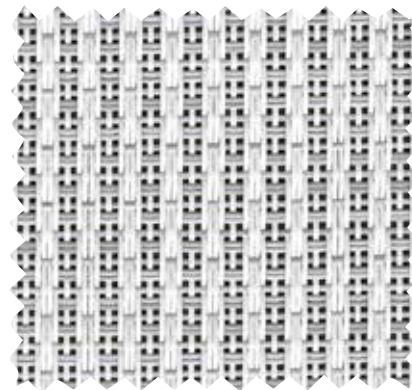
Wicker Cordoba Copper | EH4
3024081 | Construction: 22x20



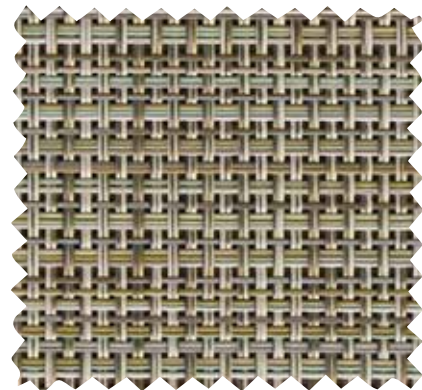
Wicker Cordoba Ninja | XSX
3024082 | Construction: 22x20



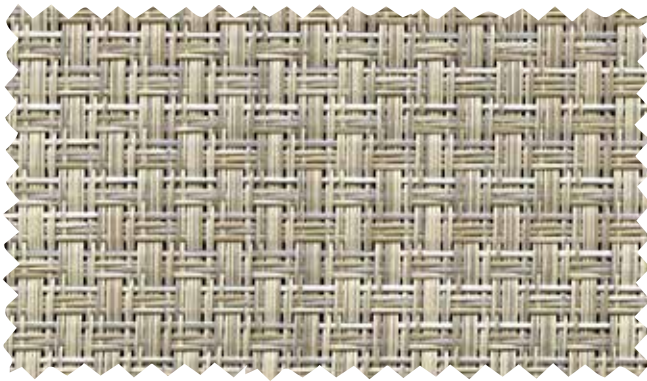
Roma Onyx | 0IT
3036898 | Construction: 22x20



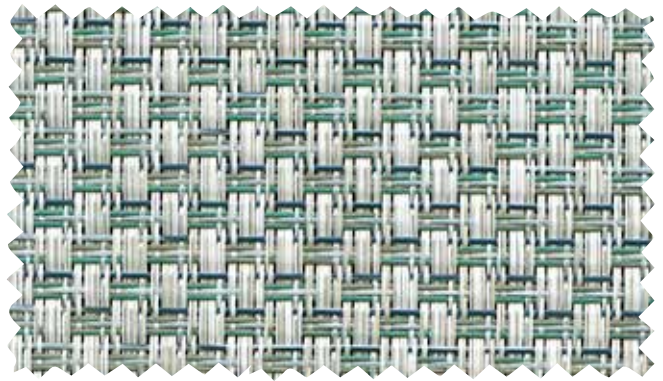
Roma Dove | 0IU
3036899 | Construction: 22x20



Tiki Glow | NG7
3032496 | Construction: 22x20



NEW | Interlock Linen | NBE
3039320 | Construction: 42x20



NEW | Interlock Calypso | DCW
3039312 | Construction: 42x20



Terrace Sapphire Glow | LFS
3036914 | Construction: 22x22



Terrace Malachite | LFR
3036913 | Construction: 22x22



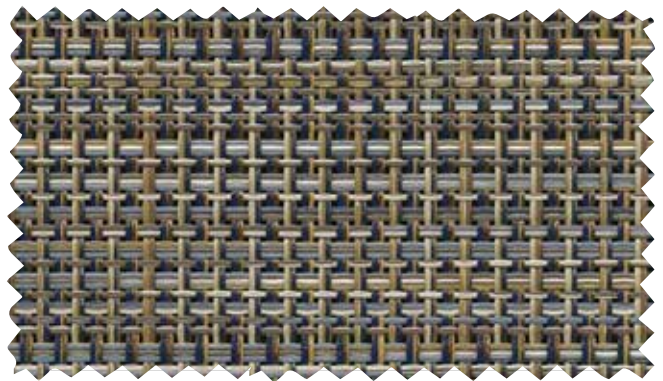
Lanier Wicker Stone | ZBC
3038266 | Construction: 42x14



Watercolor Tweed Moth | EX7
3028984 | Construction: 22x22



Terrace Sienna | KP4
3025671 | Construction: 22x22



Shelby Cadet Blue | LDY
3035584 | Construction: 22x22

FABRIC FEATURES

DURABILITY/CLEANABILITY

Functional and durable, Phifertex fabrics offer excellent performance while withstanding spills, splatters and the hustle and bustle of high traffic areas. These fabrics are easy to maintain – easily cleaned with soap and water or 50/50 bleach to water solution.

WARRANTY

Phifer offers a 3-year limited warranty for Phifertex Outdoor Fabrics. This warranty covers the fabric becoming non-functional due to loss of dimensional stability from exposure to conditions including sunlight, mildew, rot and normal atmospheric conditions. The warranty does not cover damage to the fabric from any source nor does it cover gradual fading or discoloration from atmospheric pollution or other debris. This warranty remains in effect for 3 years from the date of purchase. Phifer will provide new fabric, free of charge, to replace the non-functioning fabric. This warranty does not cover the cost of labor or other consequential or incidental expenses.



GREENGUARD

GREENGUARD Certification ensures products have met some of the world's most rigorous and comprehensive standards for low emissions of volatile organic compounds (VOCs) into indoor air. Phifer was the first manufacturer in the outdoor fabric industry to achieve GREENGUARD certification. Certification is completely voluntary and ensures that the highest industry standards are being applied to maintain indoor air quality for the health and safety of building occupants.



MICROBAN®

Phifertex fabrics are the only outdoor furniture fabrics in the world to include Microban protection. Microban antimicrobial protection works continuously to inhibit the growth of bacteria, mold and mildew that can cause stains, odors and product deterioration.



- Microban antimicrobial protection is infused into Phifertex fabrics for lasting protection that won't wash off or wear away for the lifetime of the product.
- Phifertex fabrics infused with Microban antimicrobial technology are ideal for any commercial or residential environment where microbes are a concern, including healthcare, hospitality, home, office, schools and institutions.

FLAME RETARDANCE

- National Fire Protection Association, NFPA No. 101, "Life Safety Code", Class "A" rating. (Tested in accordance to ASTM E84, Surface Burning Characteristics of Building Material.) 17x11 (ASTM E84-16), 25x25 (ASTM E84-15b), 37x15 (ASTM E84-16), Plus (ASTM E84-15b)
- International Building Code (IBC), Section 803.1.1, Class "A" rating (Tested in accordance to ASTM E84).
- Upholstered Furniture Action Council Fabric Classification Test Method 1990 (UFAC) - Class "I" Rating.
- Federal Motor Vehicles Safety Standards, Section 571.302, Standard Number 302 (FMVSS 302), Flammability of Interior Materials.
- California Technical Bulletin 117-2013, Section 1, Cover Fabric Test.

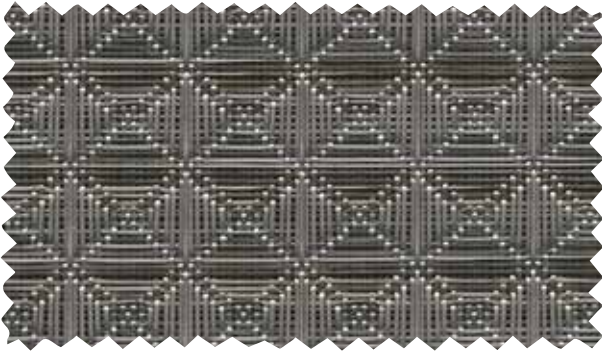


Phifertex[®]

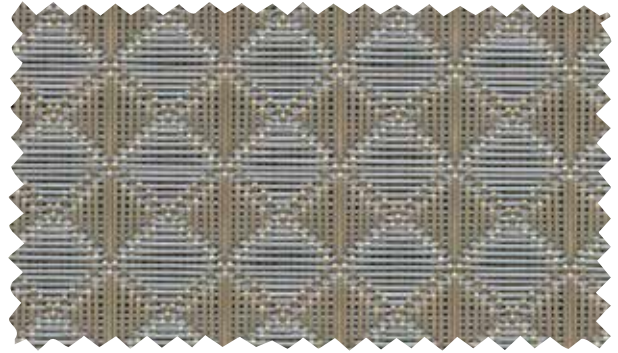
BY PHIFER

 Wicker Weaves
Slingable Fabrics

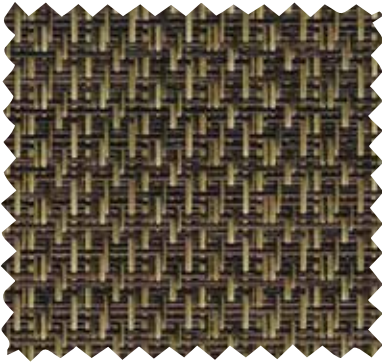




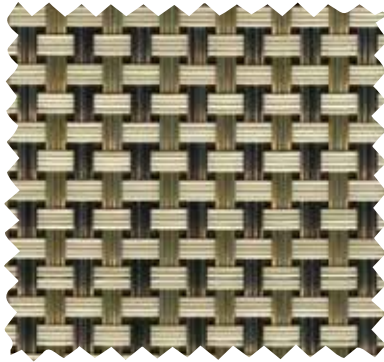
Braque Graphite | YHJ
3036915 | Construction: 25x25



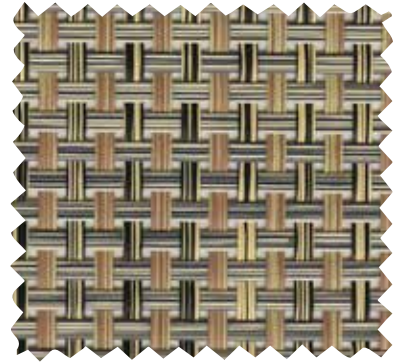
Braque Rain | LFP
3036909 | Construction: 25x25



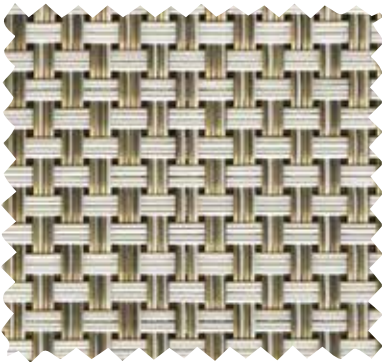
Double Dipper | BT3
3018411 | Construction: 25x25



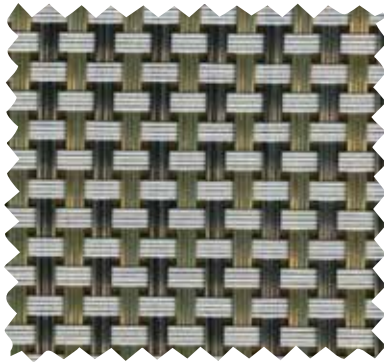
Cane Wicker Balsa | CX3
3007333 | Construction: 25x25



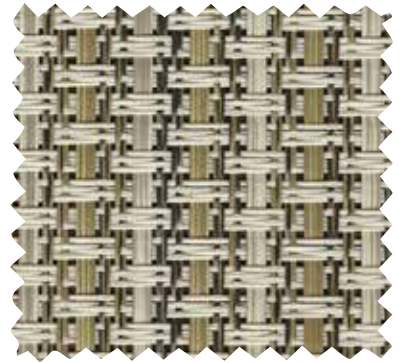
Cane Wicker Desert | AD7
3007253 | Construction: 25x25



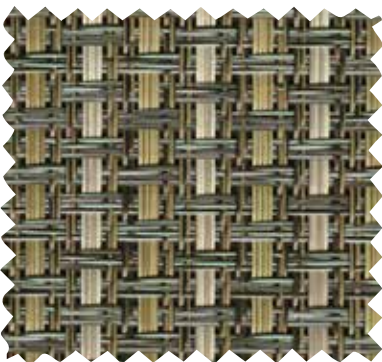
Cane Oyster | 0FE
3027664 | Construction: 25x25



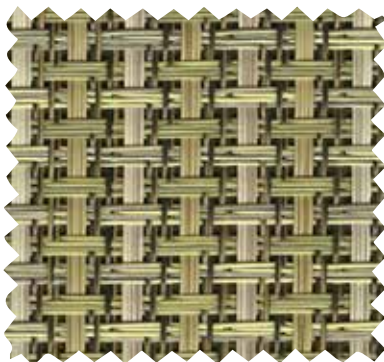
Cane Wicker Aluminum | CX2
3007328 | Construction: 25x25



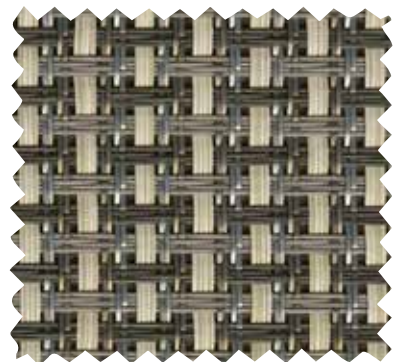
Natural | AB8
3013957 | Construction: 25x25



Turquesa | DB1
3013955 | Construction: 25x25



Verde | DB2
3013956 | Construction: 25x25



Plata | XFG
3016021 | Construction: 25x25

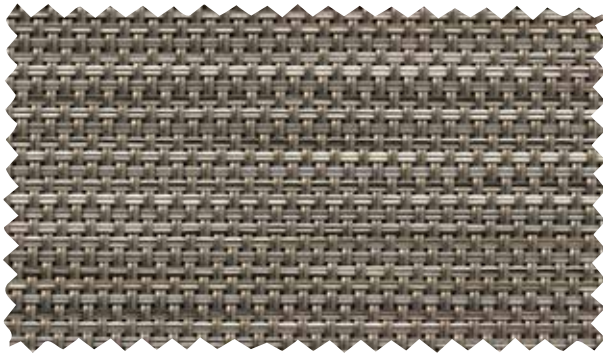




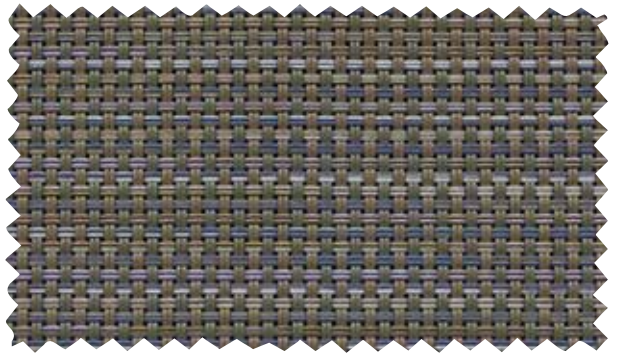
Cane Weave Paprika | KAQ
3036901 | Construction: 25x25



Cane Weave Pacific | LFQ
3036910 | Construction: 25x25



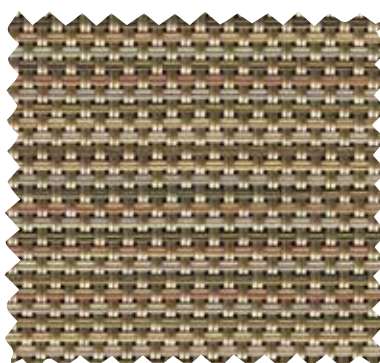
Watercolor Tweed Pearly | NG8
3032497 | Construction: 25x25



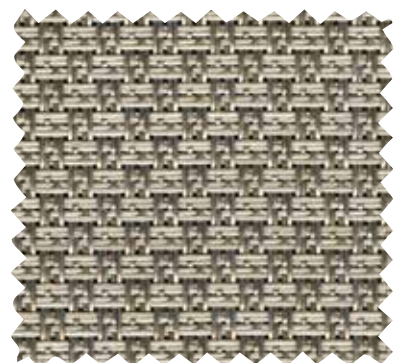
Pria Tweed Indigo | LDD
3034305 | Construction: 25x25



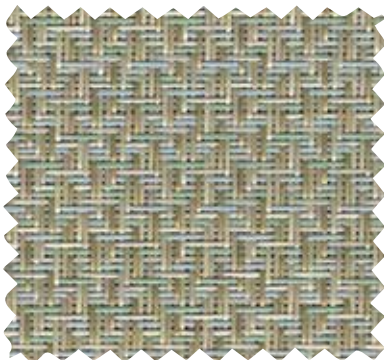
Pria Tweed Sterling | NN6
3034303 | Construction: 25x25



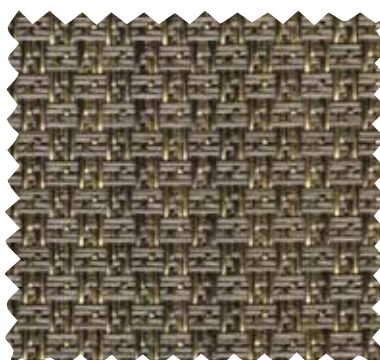
Watercolor Tweed Glow | NG5
3032494 | Construction: 25x25



Sisal Aluminum | 00V
3009605 | Construction: 25x25



Reflection Seaglass | DW6
3030825 | Construction: 25x25



Sisal Tungsten | AK0
3007292 | Construction: 25x25



Echo Valley Sadat | EH6
3024085 | Construction: 25x25



NEW | Kozo Fossil | ZBY
3039322 | Construction: 25x25



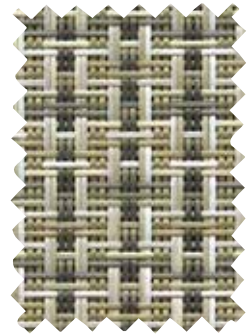
NEW | Kozo Jewel | LIW
3039316 | Construction: 25x25



NEW | Kozo Abalone | OJX
3039309 | Construction: 25x25



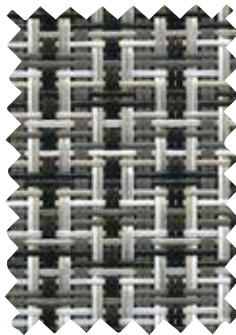
Caribbean Cane | LHT
3038264 | Construction: 25x25



Jazzy Glow | 717
3038259 | Construction: 25x20



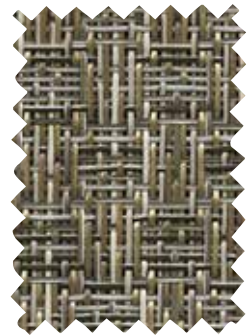
Jazzy Twilight | LHP
3038260 | Construction: 25x20



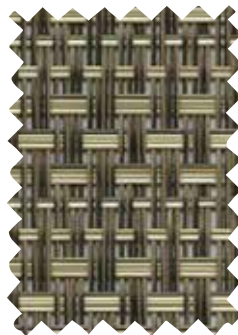
Jazzy Raven | ZAZ
3038261 | Construction: 25x20



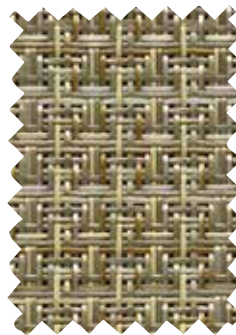
Wicker Veranda Nutmeg | EM9
3025672 | Construction: 25x20



Kamali Limestone | XZY
3029024 | Construction: 25x20



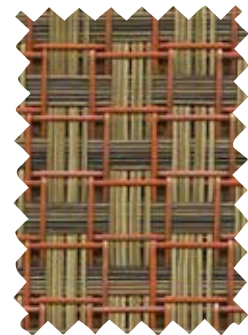
Montego | NG3
3032492 | Construction: 25x20



Shelburne Taupe | XZT
3028988 | Construction: 25x22



Bellingrath | EH3
3024083 | Construction: 25x20



Waffle Wicker Coral Topaz | EC1
3021409 | Construction: 25x25

FABRIC FEATURES

DURABILITY/CLEANABILITY

Functional and durable, Phifertex fabrics offer excellent performance while withstanding spills, splatters and the hustle and bustle of high traffic areas. These fabrics are easy to maintain – easily cleaned with soap and water or 50/50 bleach to water solution.

WARRANTY

Phifer offers a 3-year limited warranty for Phifertex Outdoor Fabrics. This warranty covers the fabric becoming non-functional due to loss of dimensional stability from exposure to conditions including sunlight, mildew, rot and normal atmospheric conditions. The warranty does not cover damage to the fabric from any source nor does it cover gradual fading or discoloration from atmospheric pollution or other debris. This warranty remains in effect for 3 years from the date of purchase. Phifer will provide new fabric, free of charge, to replace the non-functioning fabric. This warranty does not cover the cost of labor or other consequential or incidental expenses.



GREENGUARD

GREENGUARD Certification ensures products have met some of the world's most rigorous and comprehensive standards for low emissions of volatile organic compounds (VOCs) into indoor air. Phifer was the first manufacturer in the outdoor fabric industry to achieve GREENGUARD certification. Certification is completely voluntary and ensures that the highest industry standards are being applied to maintain indoor air quality for the health and safety of building occupants.



MICROBAN®

Phifertex fabrics are the only outdoor furniture fabrics in the world to include Microban protection. Microban antimicrobial protection works continuously to inhibit the growth of bacteria, mold and mildew that can cause stains, odors and product deterioration.



- Microban antimicrobial protection is infused into Phifertex fabrics for lasting protection that won't wash off or wear away for the lifetime of the product.
- Phifertex fabrics infused with Microban antimicrobial technology are ideal for any commercial or residential environment where microbes are a concern, including healthcare, hospitality, home, office, schools and institutions.

FLAME RETARDANCE

- National Fire Protection Association, NFPA No. 101, "Life Safety Code", Class "A" rating. (Tested in accordance to ASTM E84, Surface Burning Characteristics of Building Material.) 17x11 (ASTM E84-16), 25x25 (ASTM E84-15b), 37x15 (ASTM E84-16), Plus (ASTM E84-15b)
- International Building Code (IBC), Section 803.1.1, Class "A" rating (Tested in accordance to ASTM E84).
- Upholstered Furniture Action Council Fabric Classification Test Method 1990 (UFAC) - Class "I" Rating.
- Federal Motor Vehicles Safety Standards, Section 571.302, Standard Number 302 (FMVSS 302), Flammability of Interior Materials.
- California Technical Bulletin 117-2013, Section 1, Cover Fabric Test.

