

# Batyline

Chill

Outdoor  
comfort

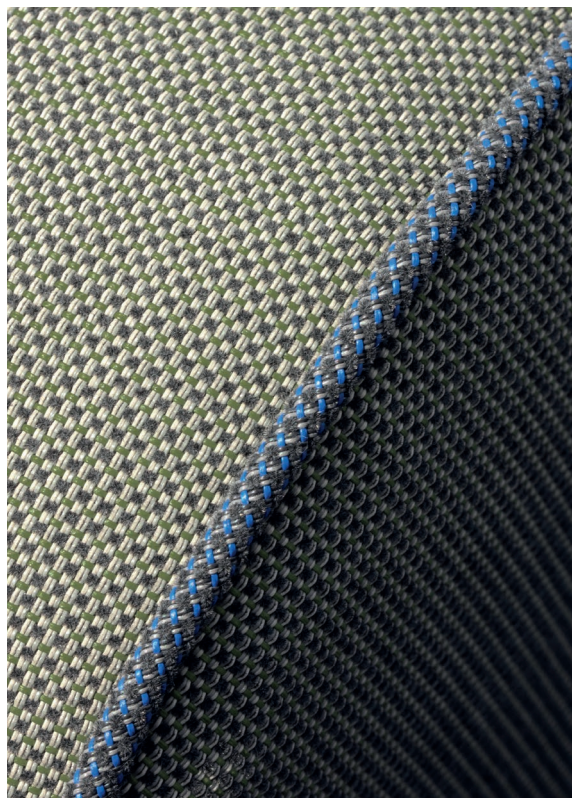
Confort  
*all'aperto*



# Batyline | Chill



# Batyline | Chill



## Batyline Eden

**Smart:** a fabric compatible not only with tensioned installation (sling) applications, but also with cushion covering

**Smart:** *un tessuto compatibile non solo con le applicazioni di installazione in tensione (sling), ma anche con il rivestimento di cuscini*

**Textile look:** the textured yarn in the weave gives the fabric a soft touch and a textile aspect

**Textile look:** *il filato strutturato dell'intreccio conferisce al tessuto un tocco morbido e un aspetto tessile*

**Robust:** the high-performance Batyline fabric

**Robusto:** *il tessuto Batyline ad alte prestazioni*

## Batyline Elios

**Softness and comfort:** the flocced yarn in the weave ensures the fabric's softness and comfort

**Morbidezza e comfort:** *il filato floccato nell'intreccio garantisce la morbidezza e il comfort del tessuto*

**Robust:** high-performance Batyline fabric with exceptional abrasion resistance properties (50,000 Martindale test cycles) for cushioning or tensioned installation (sling) applications

**Robusto:** *tessuto Batyline ad alte prestazioni con eccezionali proprietà di resistenza all'abrasione (50.000 cicli di test Martindale) per applicazioni su imbottiti o installazione in tensione (sling)*

## Waterproof versions - *Versioni impermeabili:*

Batyline Eden and Batyline Elios feature waterproof versions with the incorporation of a protective film on the back of the fabric; they're ideal for the most demanding outdoor applications.

*Batyline Eden e Batyline Elios sono versioni impermeabili con una pellicola protettiva sul retro del tessuto, ideali per le applicazioni outdoor più impegnative.*

# Batyline | Chill

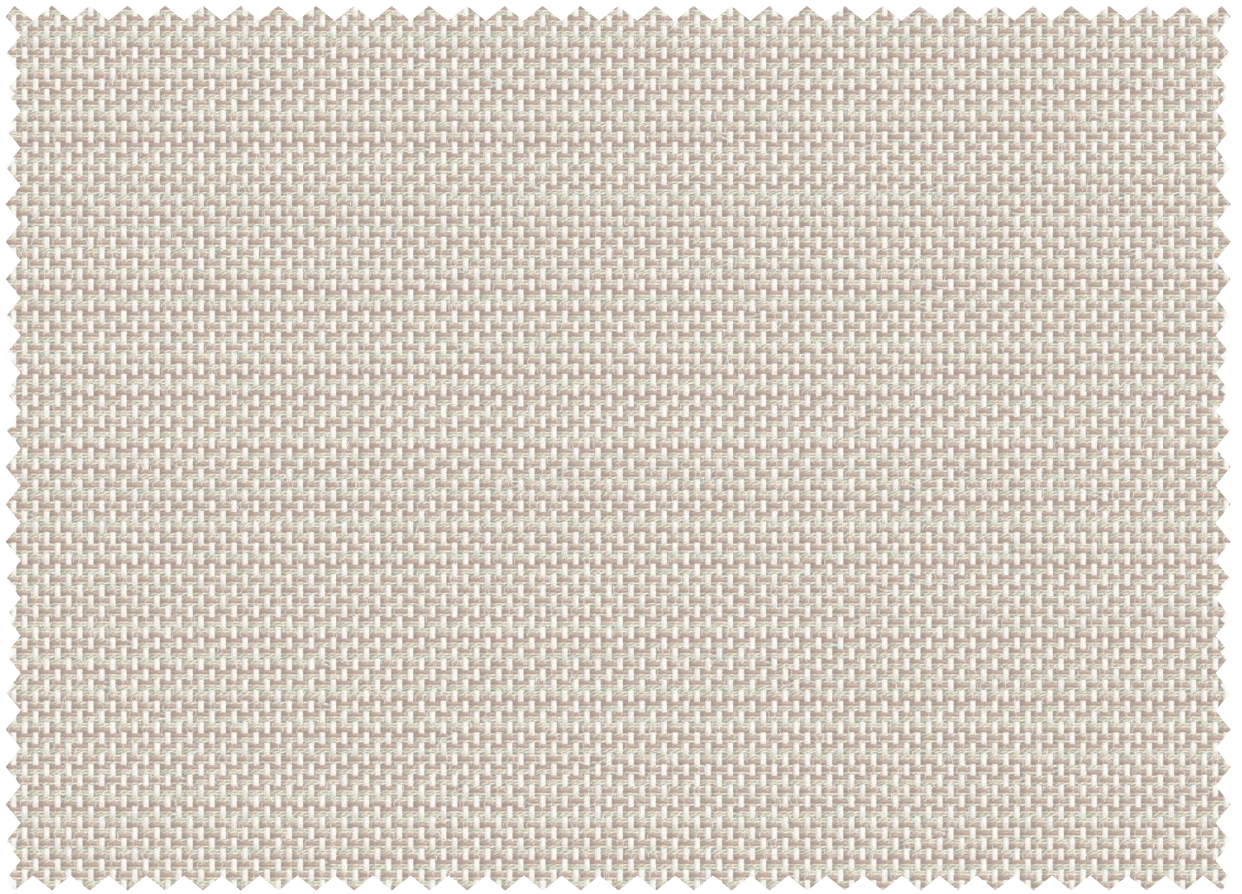
Today's users are ever more in search of warm and relaxing moments in their outdoor spaces. Fabrics in the Batyline Chill range meet this need for sensorial comfort thanks to a soft touch, a textile look and a contemporary design. The fabrics' high level of technical performance guarantees the furniture's durability.

*Gli utenti di oggi sono sempre più alla ricerca di momenti accoglienti e rilassanti nei loro spazi esterni. I tessuti della gamma Batyline Chill soddisfano questa esigenza di comfort sensoriale grazie alla morbidezza al tatto, all'aspetto tessile e al design contemporaneo. L'elevato livello di prestazioni tecniche dei tessuti garantisce la durata degli arredi.*



# Batyline Eden

## Eden



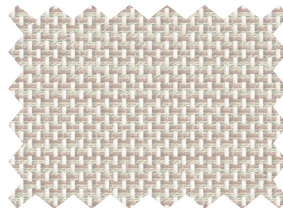
Clay  
*Argilla*

7710-51030



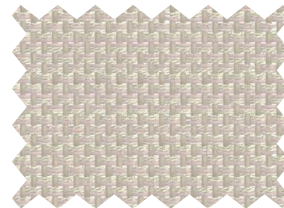
Iceberg  
*Iceberg*

7710-50718



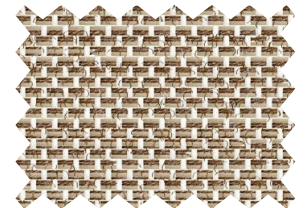
Clay  
*Argilla*

7710-51030



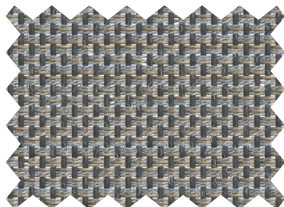
Eglantine  
*Eglantina*

7710-50969



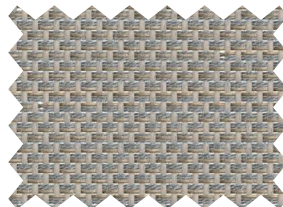
Porcelain  
*Porcellana*

7710-50719



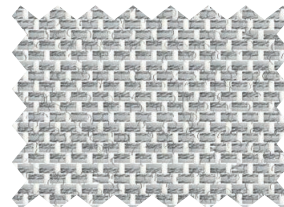
Frozen brown  
*Marrone ghiacciato*

7710-50554



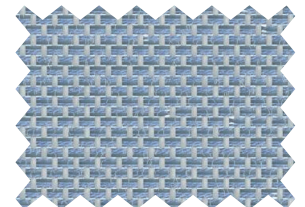
Nutmeg  
*Noce moscata*

7710-50563



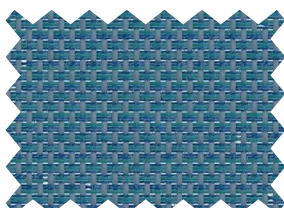
Light grey  
*Grigio chiaro*

7710-50567



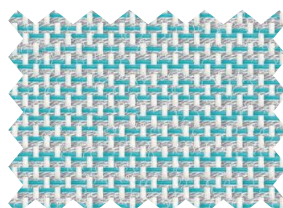
Ice cube  
*Cubetto di ghiaccio*

7710-50965



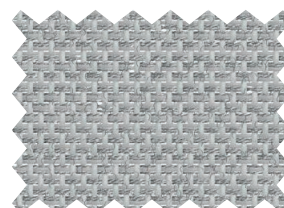
Meridian  
*Meridiano*

7710-50973



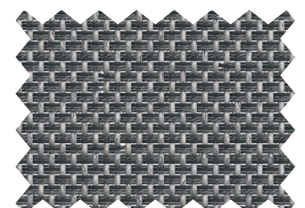
Ceramic Blue  
*Blu ceramica*

7710-51032



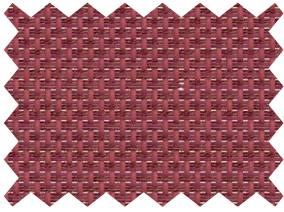
Pebble  
*Ciottolo*

7710-50566

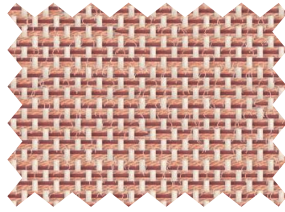


Steel  
*Acciaio*

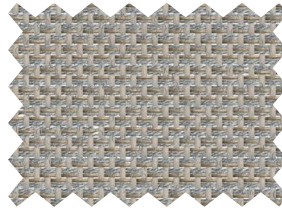
7710-50720



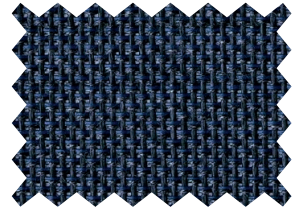
Berry Bacca **7710-50972**



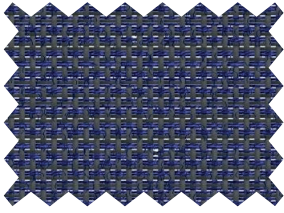
Ocre Ocra **7710-51031**



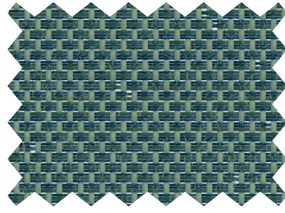
Beige grey Grigio beige **7710-50561**



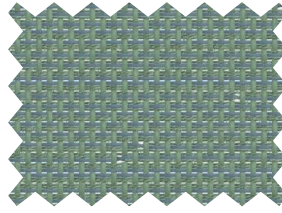
Grey blue Grigio blu **7710-50553**



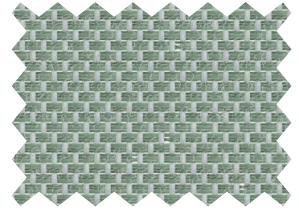
Midnight Mezzanotte **7710-50557**



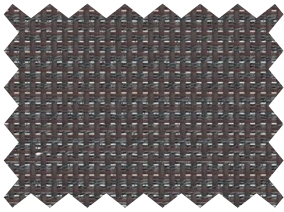
Crocodile Coccodrillo **7710-50971**



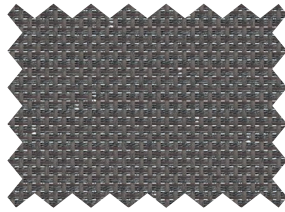
Almond tree Mandorlo **7710-50970**



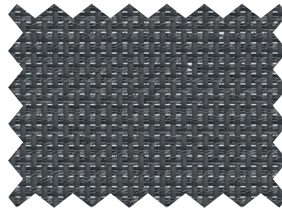
Stem Stelo **7710-50967**



Dark Chocolate Cioccolato fondente **7710-50740**



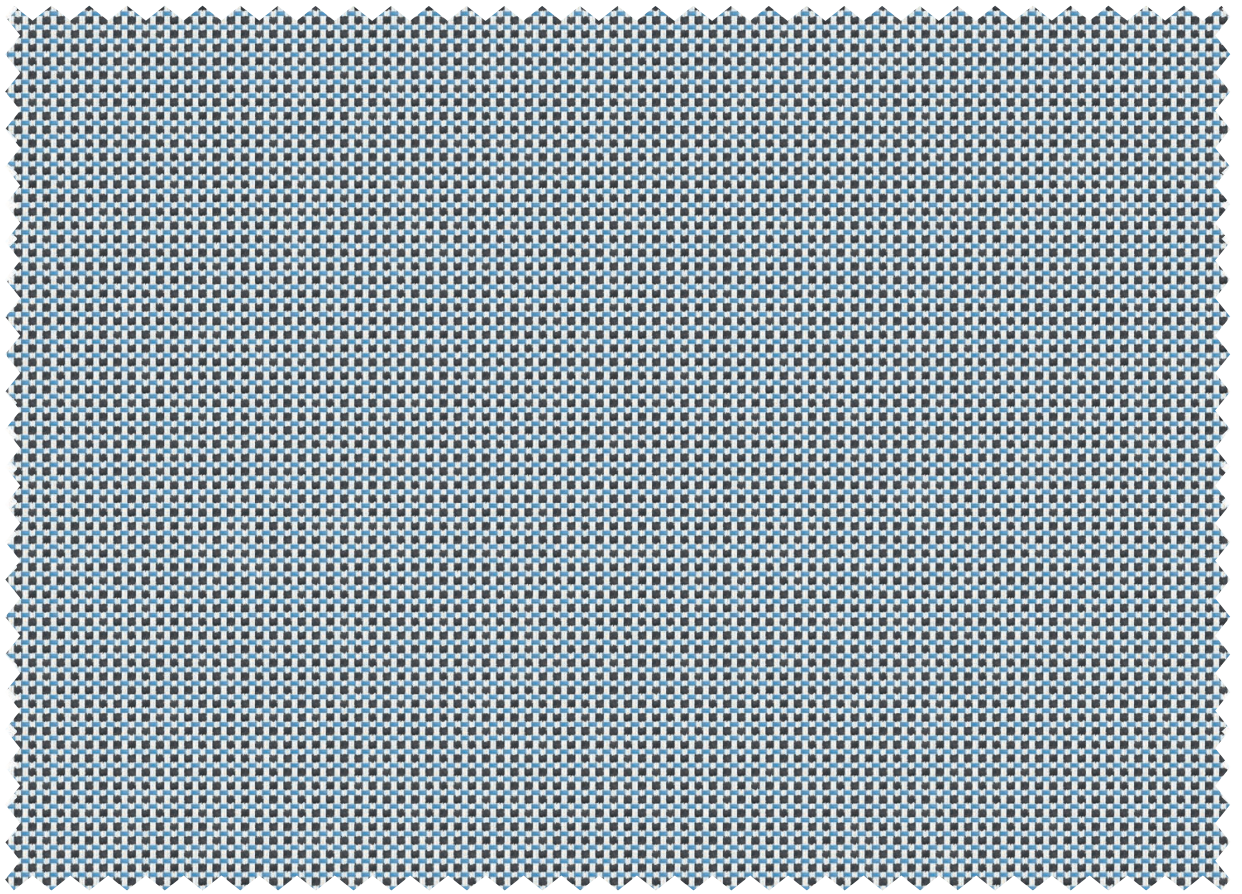
Dark brown Marrone scuro **7710-50560**



Shadow Ombra **7710-50555**

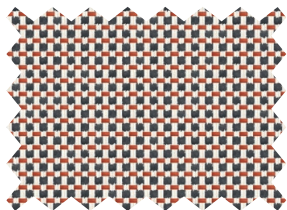
# Batyline Elios

## Elios



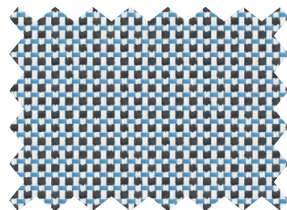
Spring  
*Primavera*

7740-51037



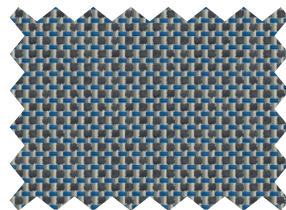
Ladybird  
*Coccinella*

7740-51036



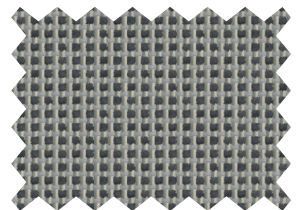
Spring  
*Primavera*

7740-51037



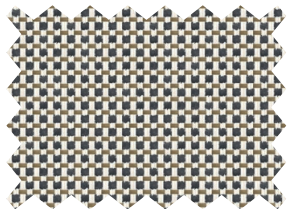
Blue Jay  
*Ghiandaia*

7740-51038



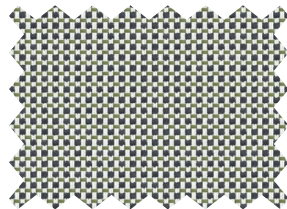
Basalt  
*Basalto*

7740-51034



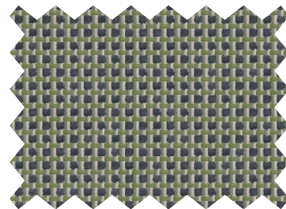
Caramel  
*Caramello*

7740-51035



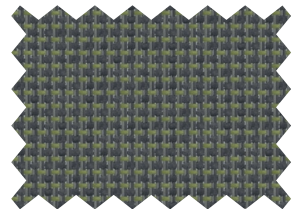
Birch  
*Betulla*

7740-51042



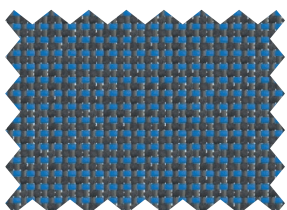
Sparrow  
*Passero*

7740-51041



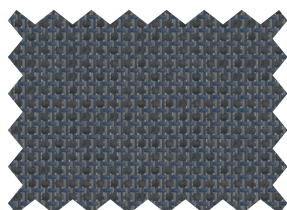
Evergreen  
*Sempreverde*

7740-51040



Sodalite  
*Sodalite*

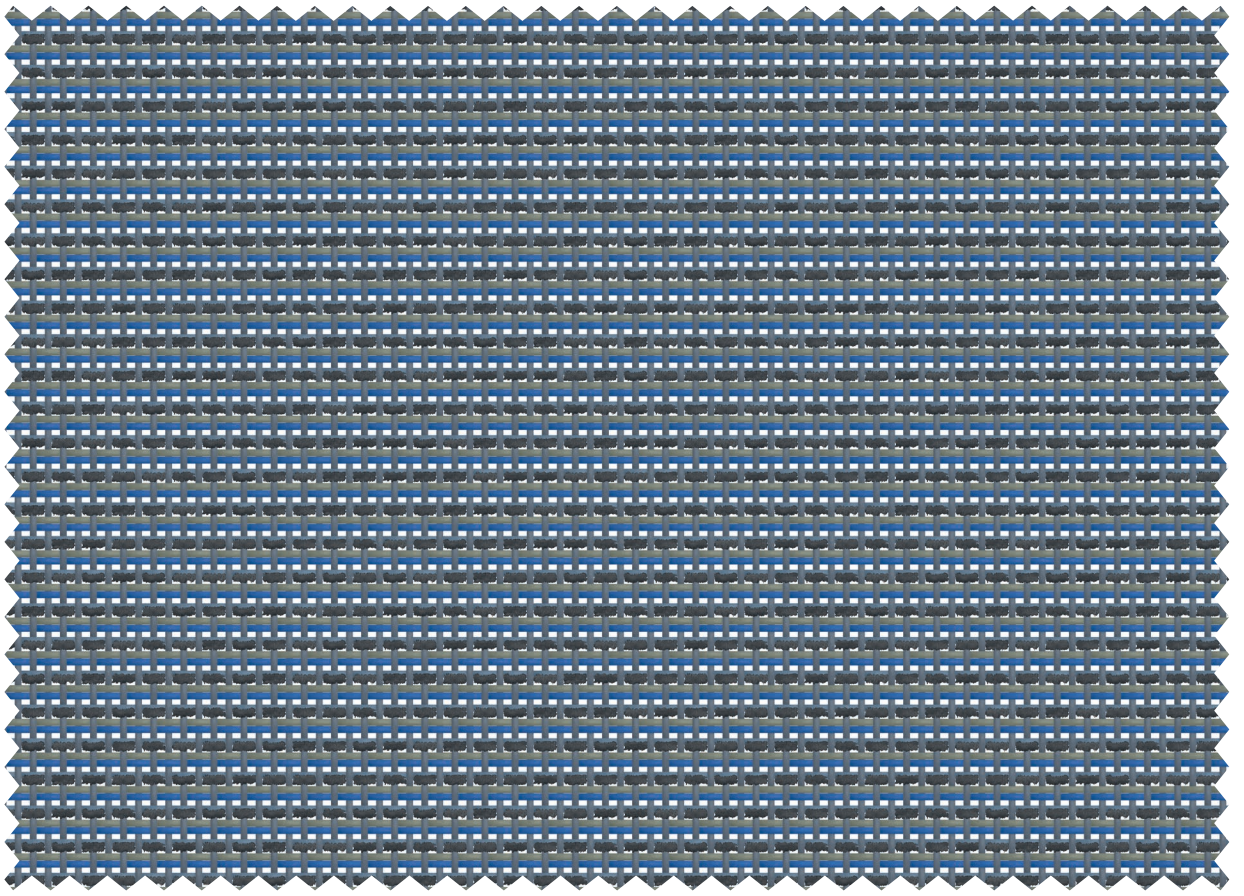
7740-51039



Dark night  
*Notte scura*

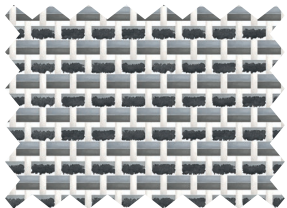
7740-51033

# Elios Sling



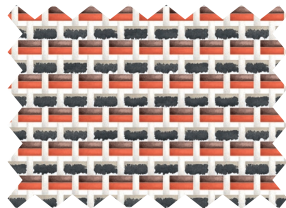
Azurite  
Azzurrite

7747-52086



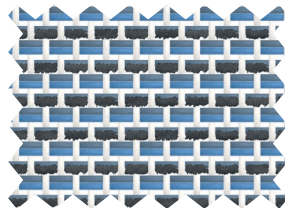
Pyrite  
Pirite

7747-52090



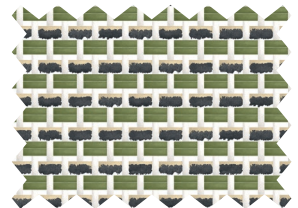
Jasper  
Diaspro

7747-52081



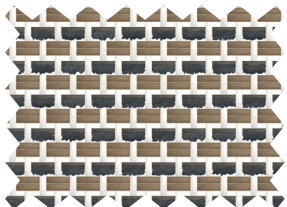
Cobalt  
Cobalto

7747-52083



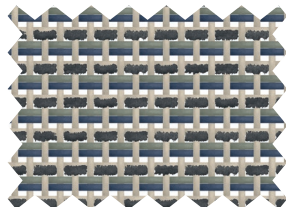
Epidote  
Epidoto

7747-52084



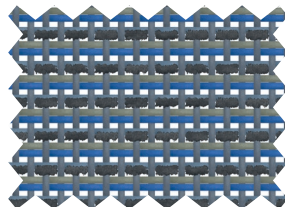
Smokey quartz  
Quarzo fumé

7747-52082



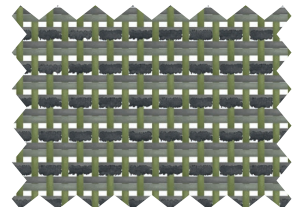
Satellite  
Satellite

7747-52085



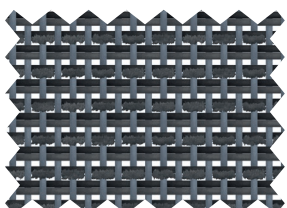
Azurite  
Azzurrite

7747-52086



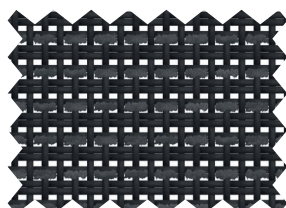
Serpentine  
Serpentina

7747-52087



Galaxite  
Galaxite

7747-52088



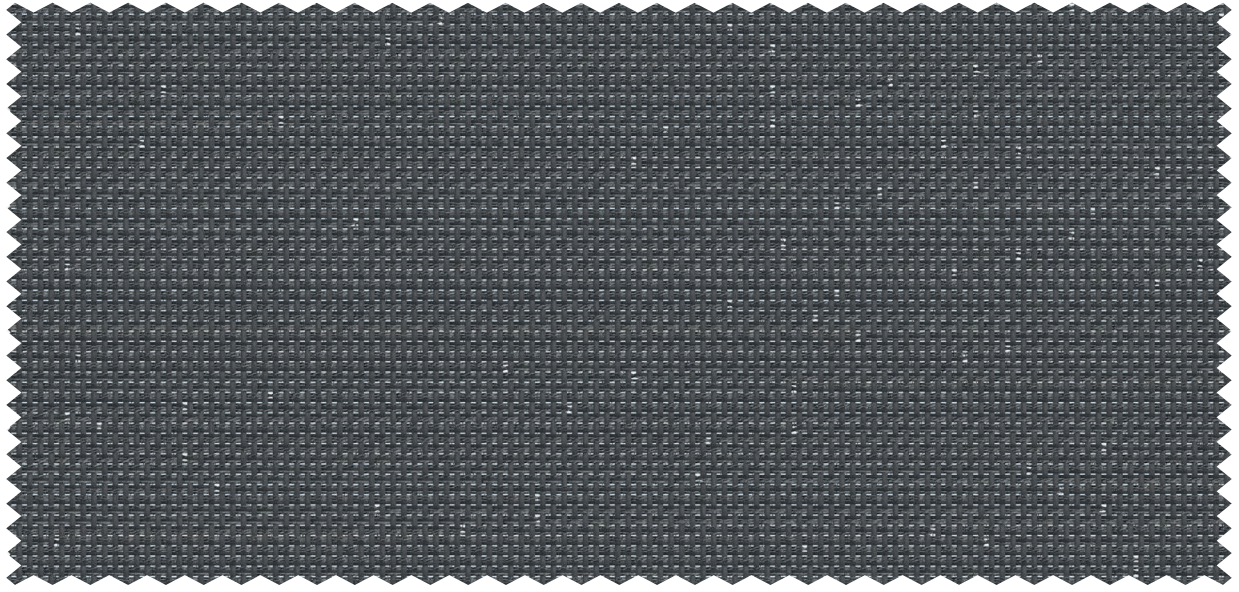
Onyx  
Onice

7747-52089



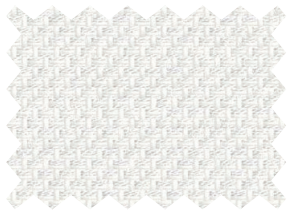
# Batylne Waterproof

Eden Waterproof - *Eden Impermeabile*



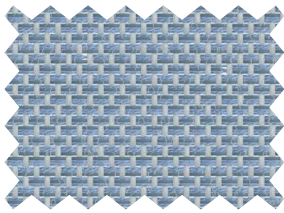
Shadow  
*Ombra*

7711WP-50555



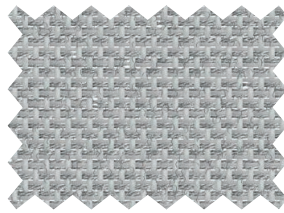
Iceberg  
*Iceberg*

7711WP-50718



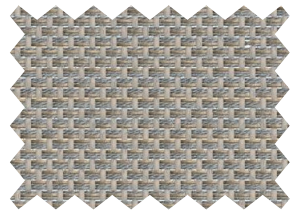
Ice cube  
*Cubetto di ghiaccio*

7711WP-50965



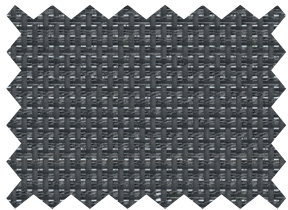
Pebble  
*Ciottolo*

7711WP-50566



Nutmeg  
*Noce moscata*

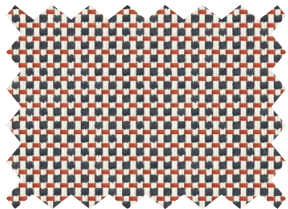
7711WP-50563



Shadow  
*Ombra*

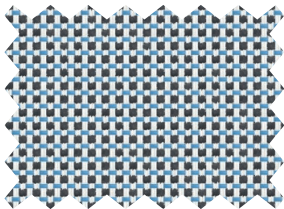
7711WP-50555

# Elios Waterproof - *Elios Impermeabile*



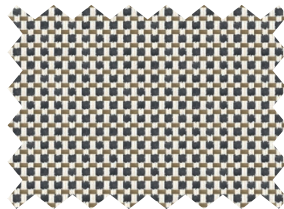
Ladybird  
*Coccinella*

7741WP-51036



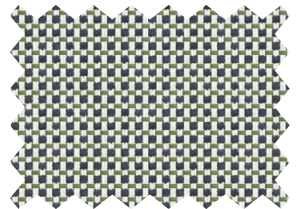
Spring  
*Primavera*

7741WP-51037



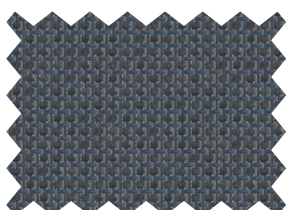
Caramel  
*Caramello*

7741WP-51035



Birch  
*Betulla*

7741WP-51042



Dark night  
*Notte scura*

7741WP-51033

# Batyline | Chill

	Batyline Elios 7740	Batyline Elios Waterproof 7741WP	Batyline Elios Sling 7747	Batyline Eden 7710	Batyline Eden Waterproof 7711WP	Standards Norme
<b>Technical properties - Proprietà tecniche</b>						
Weight - Peso	440 g/m <sup>2</sup> 13.0 oz/sq. yd	540 g/m <sup>2</sup> 15.9 oz/sq. yd	505 g/m <sup>2</sup> 14.9 oz/sq. yd	460 g/m <sup>2</sup> 13.3 oz/sq. yd	560 g/m <sup>2</sup> 16.5 oz/sq. yd	EN ISO 2286-2
Width - Altezza	140 cm • 55.1 in		180 cm • 70.9 in			
Openness factor Coefficiente di apertura	-		17%	8%	-	EN 410
<b>Physical properties - Proprietà fisiche</b>						
Tensile strength (warp/weft) Resistenza alla trazione (ordito/trama)	≥160/≥100 daN/5 cm ≥320/≥225 lbs/2 in		≥240/≥250 daN/5 cm ≥540/≥562 lbs/2 in	≥240/≥150 daN/5 cm ≥540/≥337 lbs/2 in		EN ISO 1421
Tear strength (warp/weft) Resistenza allo strappo (ordito/trama)	22/15 daN 49/34 lbs		35/40 daN 79/90 lbs	40/30 daN 90/67 lbs		DIN 53.363
Elongation under load 20 daN (warp/weft) Allungamento sotto carico 20 daN (ordito/trama)	-		≤2.5%/≤2.5%	≤2.5%/≤4%		EN ISO 1421
Abrasion resistance Resistenza all'abrasione	50,000 cycles - 50,000 cicli					EN ISO 12947-2 Martindale
	>600,000 double rubs >600 000 doppio sfregamento		>400,000 double rubs >400 000 doppio sfregamento			ASTM D4157 Wyzenbeek
Mould resistance Resistenza alle muffe	Method A, Excellent - Method A, Eccellente					EN ISO 846-A
Extreme working temperatures - Temperature di lavoro estreme	-10°C/+70°C -14°F/+158°F		-30°C/+70°C -22°F/+158°F			
Pilling test - Test di pilling	-		4/5			EN ISO 12945-2
Weather resistance Resistenza alle intemperie	7/8 for 750 h 7/8 per 750 h		-			NF EN ISO 105-B04
	GS=4 for 700 h - GS=4 per 700 h					ASTM G154
<b>Flame retardancy - Reazione al fuoco</b>						
Rating Classificazione	Pass Conforme		-			IMO MSC.307(88) (2010FTP Code) Annex 1 Part 8
	No ignition Nessuna ignizione	-	No ignition Nessuna ignizione	-		EN 1021 1&2
	Class 1 - Classe 1	-	-	-		NFPA 260
	Pass - Conforme	-	Pass - Conforme	-		Cal TB117
<b>Management systems - Sistema di gestione</b>						
Quality - Qualità: ISO 9001 • Environment - Ambiente: ISO 14001						
<b>Certifications, labels, warranty - Certificazioni, etichette, garanzie</b>						

5-year warranty  
5 anni di garanzia



For -Per 7740, 7741WP & 7747



STANDARD 100  
CQ 693/14  
IFTH  
www.oeko-tex.com

For-Per  
7710



<sup>1</sup>Summarizes the group's CSR project focused on human, to align economic performance and positive impact

<sup>1</sup>Riassume il progetto di CSR del gruppo incentrato sulle persone, per allineare il risultati economici e l'impatto positivo.

A customisation service is available under certain conditions, please contact your local sales representative for more information.

Quoted technical characteristics are average values with a +/-5% tolerance. Our products are subject to improvements resulting from technical developments and we reserve the right to modify their characteristics at any time. The purchaser of our products is responsible for checking the above data. A maintenance and spot cleaning guide is available on request.

A determinate condizioni è disponibile un servizio di personalizzazione; per ulteriori informazioni, contattare il rappresentante di zona.

Le caratteristiche tecniche indicate sono valori medi con una tolleranza del +/-5%. I nostri prodotti sono soggetti a miglioramenti derivanti da sviluppi tecnici e ci riserviamo il diritto di modificarne le caratteristiche in qualsiasi momento. L'acquirente dei nostri prodotti è responsabile della verifica dei dati sopra riportati. Su richiesta è disponibile una guida alla manutenzione e alla pulizia.