

Stamoid

Yachting

Equipment and
crew protection

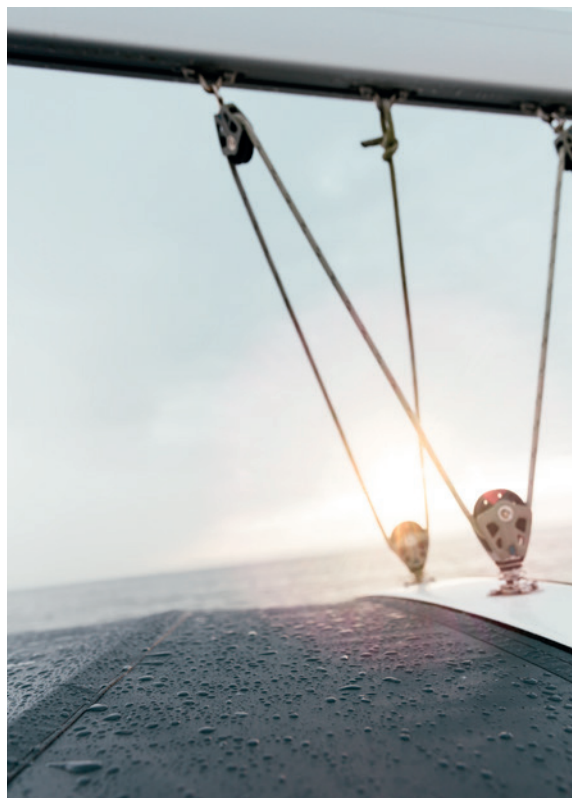
*Protección para la
tripulación y los equipos*



Stamoid | Yachting



Stamoid | Yachting



**The reference to protect
your crew and your
equipment onboard**

***El referente para la
protección de la tripulación
y del equipamiento a bordo***

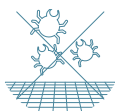
Stamoid | Yachting



Quick and easy upkeep
Mantenimiento rápido y sencillo



100% waterproof
100% impermeable



Perfect mold resistance
Perfecta resistencia al moho



Total protection against UVB rays and highly resistant to severe weather conditions
Protección total contra la radiación UV y gran resistencia a las condiciones climáticas extremas.



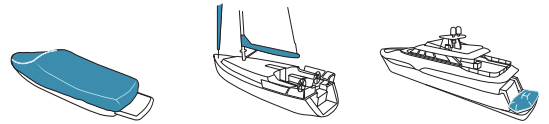
Wide range of colors and exclusive choice of long lasting shiny whites
Amplia gama de colores y oferta exclusiva de blancos brillantes de larga duración



Handling comfort thanks to the lightness of the fabrics
Manipulación fácil gracias a la ligereza de los tejidos



Stamoid Smart 1



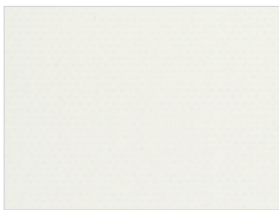
7-year warranty
7 años de garantía



Anthracite - *Antracita*

98 in • 250 cm

F4160-20166



White
Blanco
F4160-03244

98 in
250 cm



Beige
Beige
F4160-01897

98 in
250 cm



Pearl grey
Gris perla
F4160-10001

98 in
250 cm



Anthracite
Antracita
F4160-20166

98 in
250 cm

The best of technology to make your life on board easier

Lo mejor de la tecnología para facilitarle la vida a bordo

100% waterproof yet remaining fully breathable
100% impermeable sin limitar la transpirabilidad

Total protection against UVBs

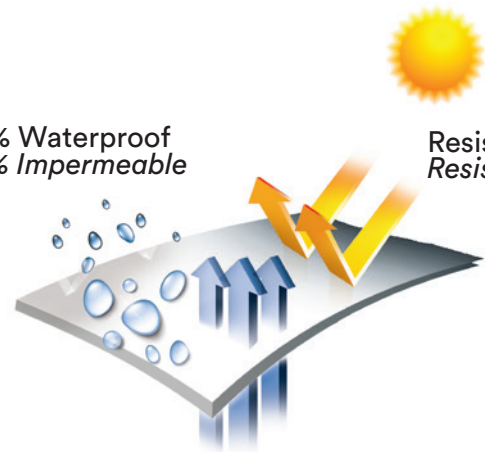
Protección total contra la radiación UV

20% lighter than standard protection and +60% more space available in comparison with standard protection

Un 20% más ligero y con un 60% más de espacio disponible en el almacenamiento que la protección estándar

100% Waterproof
100% Impermeable

Resistant
Resistente

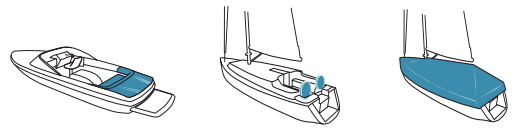


Breathable
Transpirable

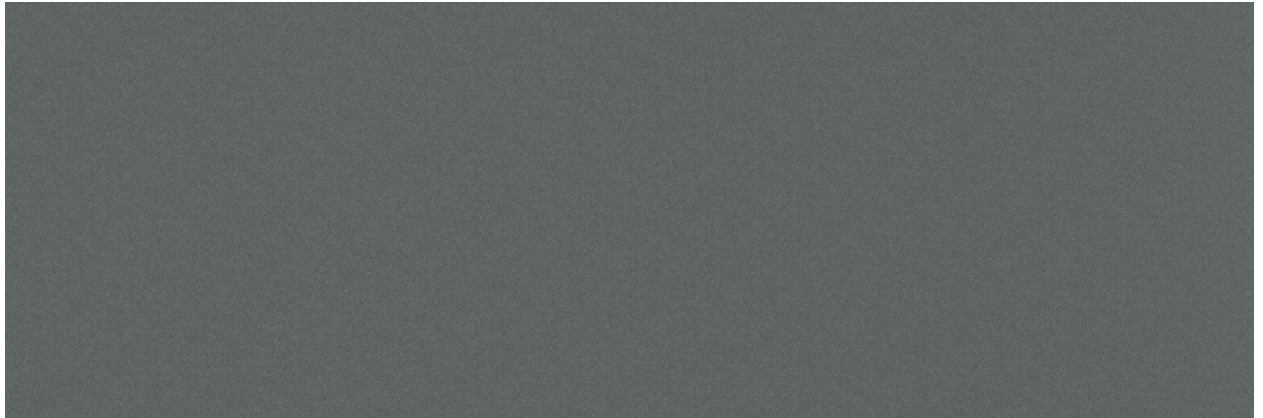
Lightweight and compact

Ligero y compacto

Stamoid Light



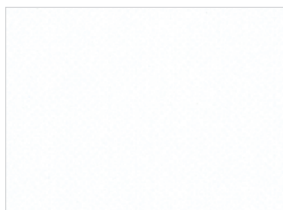
5-year warranty
5 años de garantía



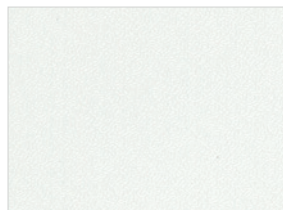
Cloud grey - *Gris nube*

59-102 in • 150-260 cm

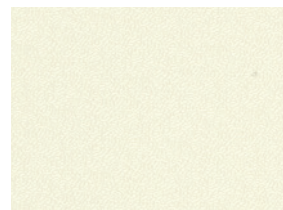
F4128-320218



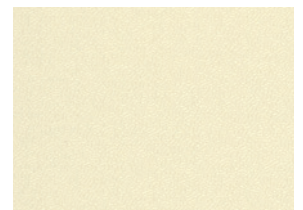
Snow White
Blanco nieve
59-102-118 in
150-260-300 cm
F4128-310309



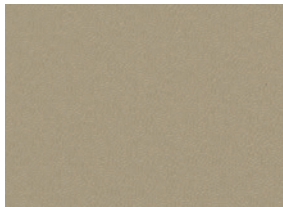
White
Blanco
59-102-118 in
150-260-300 cm
F4128-303244



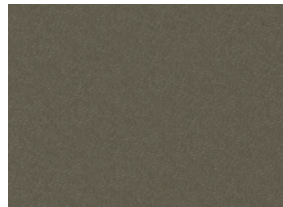
Cream
Crema
59-102 in
150-260 cm
F4128-310204



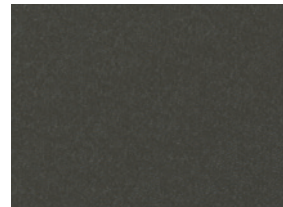
Ivory
Marfil
59-102 in
150-260 cm
F4128-310081



Beige
Beige
59-102-118 in
150-260-300 cm
F4128-301897



Desert
Desierto
59 in
150 cm
F4128-320217



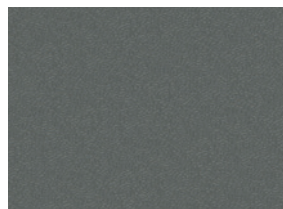
Taupe
Taupe
59-102 in
150-260 cm
F4128-320165



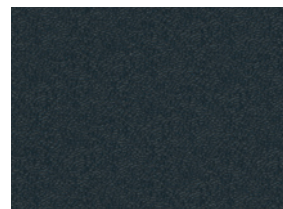
Pearl grey
Gris perla
59-102-118 in
150-260-300 cm
F4128-310001



Silver
Plata
59 in
150 cm
F4128-10124



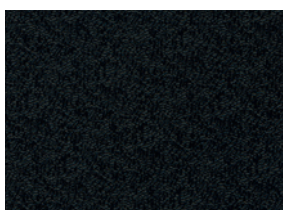
Cloud grey
Gris nube
59-102 in
150-260 cm
F4128-320218



Anthracite
Antracita
59-102 in
150-260 cm
F4128-320166



Navy
Navy
59-102 in
150-260 cm
F4128-310235

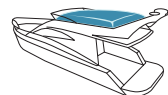
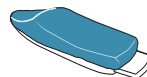


Black
Negro
59-102 in
150-260 cm
F4128-300002

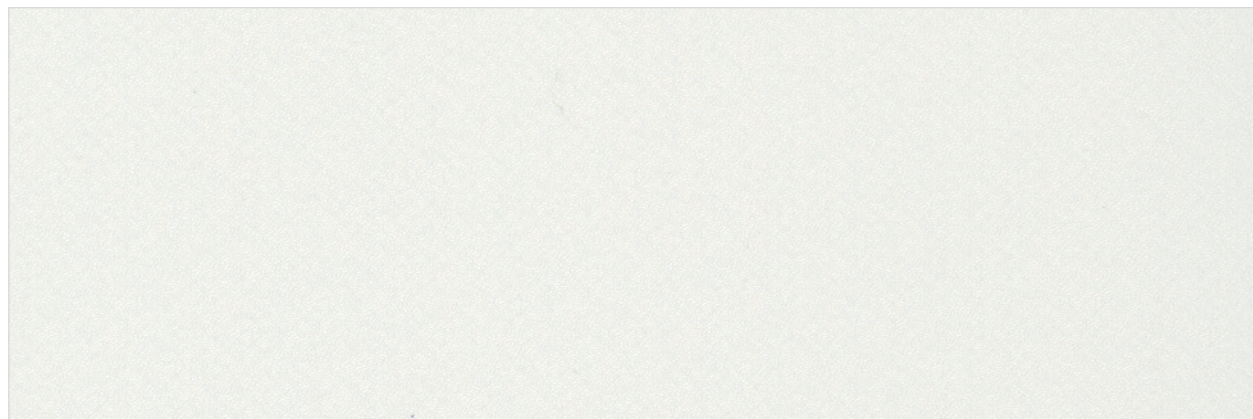


Royal Blue
Azul royal
59-102 in
150-260 cm
F4128-304997

Stamoid Heavy cover



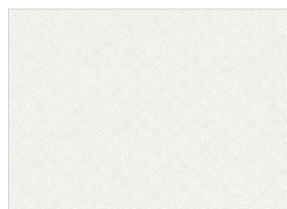
5-year warranty
5 años de garantía



White - *Blanco*

260 cm • 102 in

F4313-03244



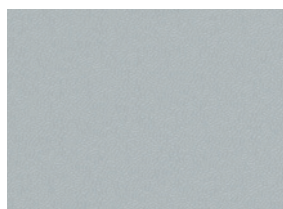
White
Blanco
F4313-03244

102 in
260 cm



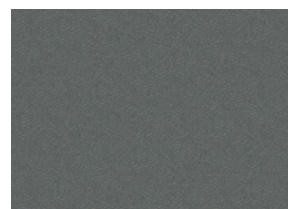
Beige
Beige
F4313-01897

102 in
260 cm



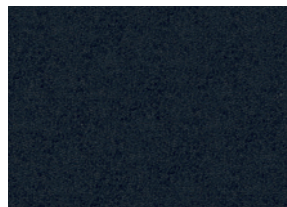
Pearl grey
Gris perla
F4313-10001

102 in
260 cm



Cloud grey
Gris nube
F4313-20218

102 in
260 cm

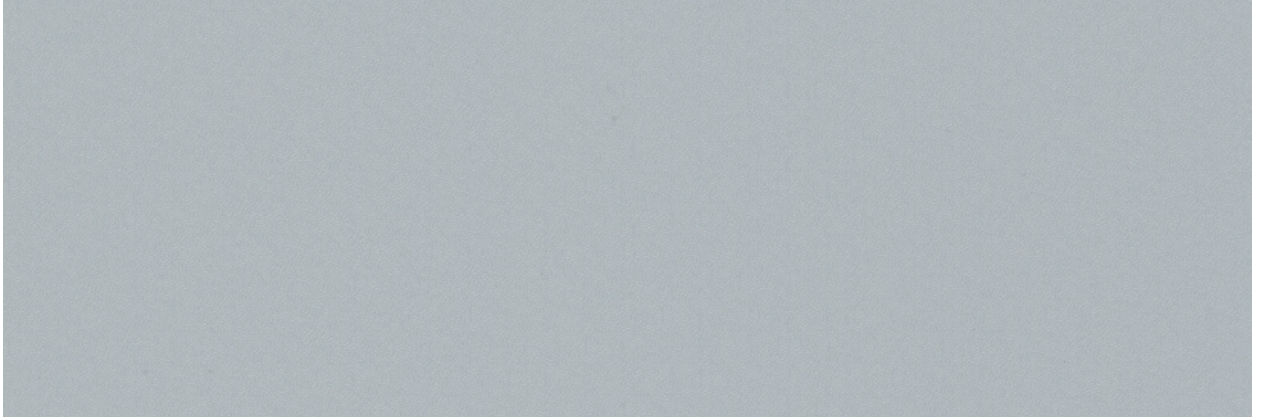
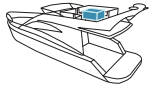
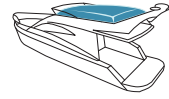
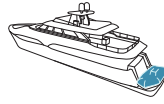


Navy
Navy
F4313-10235

102 in
260 cm

Stamoid Easy

2-year warranty
2 años de garantía



Pearl grey - *Gris perla*

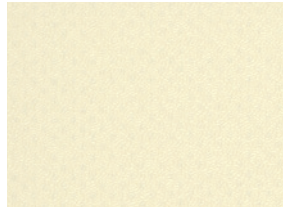
260 cm • 102 in

F4748-10001



White
Blanco
F4748-03244

102 in
260 cm



Ivory
Marfil
F4748-10081

102 in
260 cm



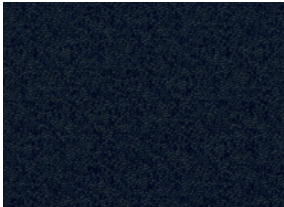
Pearl grey
Gris perla
F4748-10001

102 in
260 cm



Royal blue
Azul royal
F4748-04997

102 in
260 cm

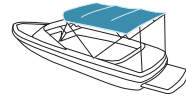


Navy
Navy
F4748-10235

102 in
260 cm

Stamoid Top

5-year warranty
5 años de garantía



Desert - *Desierto*

59 in • 150 cm

F3933-20217



Snow White
Blanco nieve
F3933-10309

59-102 in
150-260 cm



White
Blanco
F3933-03244

59-102 in
150-260 cm



Cream
Crema
F3933-10204

59-102 in
150-260 cm



Ivory
Marfil
F3933-10081

150 cm
59 in



Beige
Beige
F3933-01897

59-102 in
150-260 cm



Desert
Desierto
F3933-20217

59 in
150 cm



Taupe
Taupe
F3933-20165

59 in
150 cm



Pearl grey
Gris perla
F3933-10001

59-102 in
150-260 cm



Cloud grey
Gris nube
F3933-20218

150 cm
59 in



Anthracite
Antracita
F3933-20166

59 in
150 cm



Navy
Navy
F3933-10235

59 in
150 cm



Black
Negro
F3933-00002

59-102 in
150-260 cm



Royal Blue
Azul royal
F3933-04997

59 in
150 cm

	Stamoid Light F4128	Stamoid Smart 1 F4160	Stamoid Easy F4748	Stamoid Heavy Cover F4313	Stamoid Top F3933	
	Technical properties - Características técnicas					Standards Normas
Coating <i>Recubrimiento</i>	1 side PVC <i>1 cara PVC</i>	1 side silicone <i>1 cara silicona</i>	1 side PVC <i>1 cara PVC</i>	1 side PVC <i>1 cara PVC</i>	2 sides PVC <i>2 caras PVC</i>	
Base cloth <i>Soporte</i>	280 Dtex PES HT	280/550 Dtex PES HT	1,100 Dtex PES HT <i>1 100 Dtex PES HT</i>	1,100 Dtex PES HT <i>1 100 Dtex PES HT</i>	280 Dtex PES HT	
Weight <i>Peso</i>	8.8 oz/sq.yd <i>300 g/m²</i>	8.3 oz/sq.yd <i>280 g/m²</i>	12.7 oz/sq.yd <i>430 g/m²</i>	15.3 oz/sq.yd <i>520 g/m²</i>	12.7 oz/sq.yd <i>430 g/m²</i>	EN ISO 2286-2
Length of rolls <i>Longitud del rollos</i>	32.81 - 54.68 yd <i>30 - 50 ml</i>	32.81 yd <i>30 ml</i>	32.81 yd <i>30 ml</i>	32.81 yd <i>30 ml</i>	32.81 - 54.68 yd <i>30 - 50 ml</i>	
Thickness <i>Espesor</i>	360 microns <i>0,36 mm</i>	300 microns <i>0,30 mm</i>	460 microns <i>0,46 mm</i>	590 microns <i>0,59 mm</i>	380 microns <i>0,38 mm</i>	
Tensile strength (warp/weft) <i>Resistencia a la rotura (urdimbre/trama)</i>	315/315 lbs/2 in <i>140/140 daN/5 cm</i>	281/315 lbs/2 in <i>125/140 daN/5 cm</i>	517/517 lbs/2 in <i>230/230 daN/5 cm</i>	719/781 lbs/2 in <i>320/350 daN/5 cm</i>	292/292 lbs/2 in <i>130/130 daN/5 cm</i>	EN ISO 1421
Tear strength (warp/weft) <i>Resistencia al desgarro (urdimbre/trama)</i>	25/25 lbs/2 in <i>11/11 daN</i>	40/67 lbs/2 in <i>18/30 daN</i>	72/63 lbs/2 in <i>32/28 daN</i>	106/115 lbs/2 in <i>47/51 daN</i>	16/18 lbs/2 in <i>7/8 daN</i>	DIN 53.363
Flexing resistance (no damage) <i>Resistencia a la flexión (sin daños)</i>	-	100.000 cycles <i>100 000 ciclos</i>	-	-	-	EN ISO 32100 Bally test
Color light fastness <i>Solidez del color a la luz</i>	>4/5 (1,000 h.) <i>>4/5 (1 000 h.)</i>	>4/5 (1,000 h.) <i>>4/5 (1 000 h.)</i>	>4/5 (1,000 h.) <i>>4/5 (1 000 h.)</i>	>4/5 (1,000 h.) <i>>4/5 (1 000 h.)</i>	>4/5 (1,000 h.) <i>>4/5 (1 000 h.)</i>	QUVA test according ASTM G 154
UV Filtration <i>Filtración UV</i>	UPF 50+	UPF 50+	UPF 50+	UPF 50+	UPF 50+	NF 13758-1 +A1
Resistance to water infiltration <i>Resistencia a infiltración de agua</i>	-	>700 cm	-	-	-	EN 20811
Breathability <i>Transpirabilidad</i>	-	1.5 oz/sq.yd/24h <i>50 g/m²/24h</i>	-	-	-	
Mold resistance <i>Resistencia al moho</i>	Degree 0, excellent <i>Grado 0, excelente</i>	Degree 0, excellent <i>Grado 0, excelente</i>	Degree 0, excellent <i>Grado 0, excelente</i>	Degree 0, excellent <i>Grado 0, excelente</i>	Degree 0, excellent <i>Grado 0, excelente</i>	EN ISO 846-A
Extreme working temperatures <i>Temperaturas extremas de uso</i>	-4°F / +158°F <i>-20°C / +70°C</i>	-58°F / +248°F <i>-50°C / +120°C</i>	-4°F / +158°F <i>-20°C / +70°C</i>	-4°F / +158°F <i>-20°C / +70°C</i>	-4°F / +158°F <i>-20°C / +70°C</i>	

Management system - Sistemas de gestión

Quality - Calidad: ISO 9001 • **Environment - Medio ambiente:** ISO 14001 • **Energy - Energía:** ISO 50001 only for F4128 - solo para F4128

Certifications, labels - Certificados, etiquetas

Smart Coating Technology <i>Tecnología</i>	Smart Coating Technology <i>Tecnología</i>	Smart Coating Technology <i>Tecnología</i>	Smart Coating Technology <i>Tecnología</i>	Smart Coating Technology <i>Tecnología</i>	Smart Coating Technology <i>Tecnología</i>	
						

¹ Summarizes the group's CSR project focused on human, to align economic performance and positive impact.

¹ Resume el proyecto de RSC del Grupo centrado en las personas, diseñado para alinear el rendimiento económico y el impacto positivo.

The technical data above are average values with a +/- 5% tolerance.

The buyer of our products is fully responsible for their application or their transformation concerning any possible third party. The buyer of our products is responsible for their implementation and installation in compliance with standards, codes of practice and safety regulations in force in destination countries. To ensure warranty effectiveness, refer to warranty certificate concerned available on demand. The values quoted above represent results of tests performed in compliance with common design practices and are provided for information only to enable customers to make the best use of our products. Our products are subject to changes prompted by technological developments. We reserve the right to modify their characteristics at any time. The buyer of our products is responsible for checking the validity of the above data.

The colours and textures presented are included for information only.

Los datos técnicos indicados son valores medios con una tolerancia de +/- 5%.

El comprador de nuestros productos es responsable de su aplicación o tratamiento con respecto a cualquier derecho de terceros. El comprador de nuestros productos también es responsable de su uso e instalación de acuerdo con las normas, reglas del arte y reglamentos de seguridad del país de destino. Para la garantía contractual, consulte nuestro texto de garantía. Los valores mencionados en este documento son los resultados de las pruebas de acuerdo con las prácticas en el campo de los estudios, se dan como una indicación con el fin de permitir a nuestros clientes el mejor uso de nuestros productos. Nuestros productos están sujetos a cambios como resultado del progreso técnico y nos reservamos el derecho de modificar sus características en cualquier momento. Es responsabilidad del comprador de nuestros productos comprobar la validez de los datos anteriores.

Los colores y texturas presentadas están dadas a título indicativo.